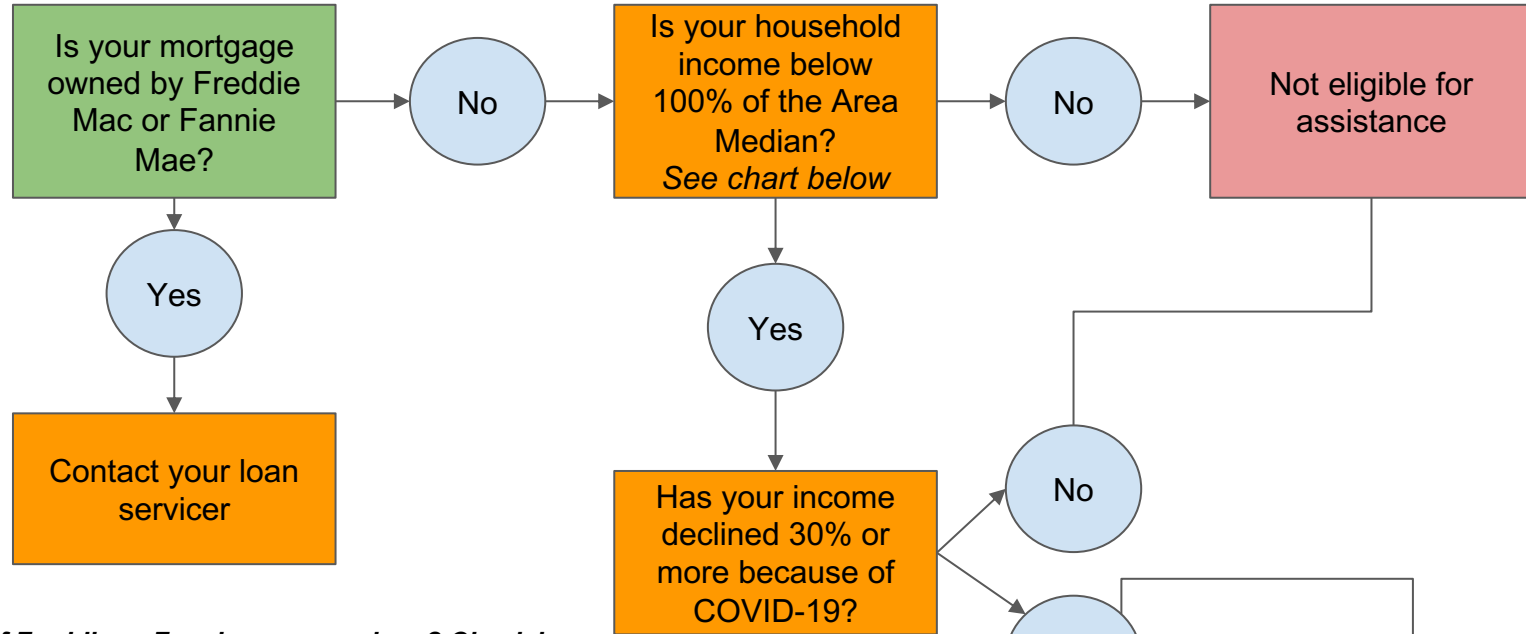




COVID-19 Assistance for Homeowners



Not sure if Freddie or Fannie own your loan? Check here:

Fannie Mae - <https://www.knowyouroptions.com/loanlookup>

Freddie Mac - <https://www3.freddiemac.com/loanlookup/>

	Number of People in Household							
	1	2	3	4	5	6	7	8
80% AMI	\$44,350	\$50,650	\$57,000	\$63,300	\$68,400	\$73,450	\$78,500	\$83,600
100% AMI	\$55,437	\$63,312	\$71,250	\$79,125	\$85,500	\$91,812	\$98,125	\$104,500

[Pandemic Mortgage Assistance Program Pennsylvania Housing Financing Agency \(PHFA\)](#)